



Catalog 2015

for locals!

*Built
in europe
to rock n roll
in all terrain.
handcrafted
by locals.*



INTRO

WIR MÖCHTEN DEN PLATZ HIER EINMAL NUTZEN, UM UNS BEI ALL UNSEREN FREUNDEN UND GESCHÄFTSPARTNERN ZU BEDANKEN, DIE UNS SEIT DEM ERSTEN TAG MIT RAT UND TAT UNTERSTÜTZEN UND OHNE DIE WIR HEUTE NICHT DA WÄREN, WO WIR JETZT SIND. EBENFALLS DANKE AN ALL UNSERE TEAMFAHRER, OHNE EUCH HÄTTEN WIR KEIN GESICHT DA DRAUSSEN. ZU GUTER LETZT, DANKE EUCH ALLEN, IHR LOCALS DA DRAUSSEN!

WE WOULD LIKE TO TAKE THE CHANCE AND USE THIS SPACE TO THANK ALL OUR FRIENDS AND BUSINESS PARTNERS WHO SUPPORT US SINCE DAY ONE AND WITHOUT WHOSE HELP WE WOULDN'T BE TODAY WHERE WE ARE NOW. THANKS ALSO TO ALL OUR TEAM RIDERS, WITHOUT YOU WE WOULDN'T HAVE A FACE OUT THERE. LAST BUT NOT LEAST, THANK YOU ALL, THE LOCALS OUT THERE!



ICONS / ICONS

DAMIT IHR DIE FEATURES DER EINZELNEN ARTIKEL IMMER GLEICH PARAT HABT, HABEN WIR SIE MIT EIGENEN ICONS VERSEHEN. HIER FINDET IHR DIE ERLÄUTERUNGEN.

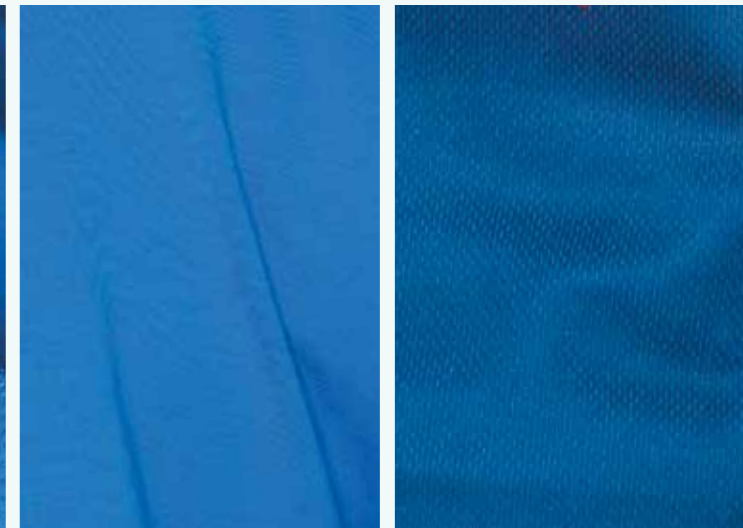
IN ORDER TO HAVE ALL FEATURES OF OUR ARTICLES AT HAND WE HAVE CREATED CUSTOMIZED ICONS. HERE YOU GET THEM EXPLAINED.



MATERIALIEN / MATERIAL

BEIM BIKEN WERDEN DIE MATERIALIEN EXTREMEN STRAPAZEN AUSGESETZT. DAHER SUCHEN WIR UNSERE STOFFE UND ACCESSOIRES NACH STRENGEN KRITERIEN AUS UM EUCH DIE BESTMÖGLICHE QUALITÄT UND FUNKTION ZU BIETEN.

WHILE CYCLING THE MATERIAL GETS EXPOSED TO EXTREME STRAINS. THEREFOR WE SELECT OUR FABRICS AND ACCESSORIES ACCORDING TO ROUGH CRITERIA IN ORDER TO PROVIDE YOU WITH THE BEST QUALITY AND FUNCTION.



WASSERDICHT
WATERPROOF



WASSERABWEISEND
WATER - REPELLENT



WINDDICHT
WINDPROOF



ATMUNGSAKTIV
BREATHABLE



SCHWEISSTRANSPORTIEREND
MOISTURE TRANSMITTING



PARKTICKET TASCH
PARKTICKET POCKET



WASSERDICHT
WATERSEALED STITCHES



VERSTÄRKT
STRONG STITCHES



IPOD TASCH
IPOD POCKET



100%
RECYCELTES MATERIAL
RECYCLED MATERIAL



ÖKOLOGISCHER FUSSABDRUCK
GREEN FOOTPRINT



VON LOCALS FÜR LOCALS
BY LOCALS FOR LOCALS

SYMPATEX
THE SYMPATEX MEMBRANE.
GUARANTEED GREEN.



THE COMPACT HYDROPHILIC SYSTEM WITH A LONG TERM EFFECT ALTHOUGH IT SOUNDS COMPLICATED, IT IS ACTUALLY VERY STRAIGHTFORWARD. WHEN THE BODY SWEATS, IT DOES SO TO PROTECT ITSELF FROM OVERHEATING. ALTHOUGH THIS NATURAL PROCESS IS VITAL, IT ALSO CREATES THE RISK THAT THE BODY WILL BE COOLED EXCESSIVELY, FOR EXAMPLE IF THE MOISTURE IN THE CLOTHING REMOVES THE HEAT FROM THE BODY. THE CONSEQUENCES OF THIS WOULD BE REDUCED PERFORMANCE AND A HIGH RISK OF CATCHING A COLD. THE SOLUTION IS CALLED SYMPATEX.

EXCELLENT COMFORT WHATEVER THE WEATHER - WATERPROOF, BREATHABLE, WINDPROOF THERE IS NOTHING MORE UNPLEASANT THAN WET AND COLD CLOTHING. SYMPATEX HAS THEREFORE DEVELOPED A SPECIAL MEMBRANE WHICH ABSORBS THE WATER VAPOUR AND REMOVES IT THROUGH THE CLOTHING TO THE OUTSIDE. THIS KEEPS THE BODY WARM AND DRY EVEN IN EXTREME SITUATIONS, AND THE BEST THING ABOUT IT IS THAT THE HIGHER THE PHYSICAL ACTIVITY, THE MORE EFFICIENT THE SYMPATEX MEMBRANE WORKS. FUNCTIONAL TEXTILES WITH A SYMPATEX MEMBRANE ALSO PROVIDE EFFECTIVE PROTECTION FROM LOW TEMPERATURES AND RAIN.

BASIC MEMBRANE PROPERTIES

- COMPACT HYDROPHILIC MEMBRANE
- COMPLETELY SAFE COPOLYMER (OXYGEN, CARBON, HYDROGEN) MADE OF POLYESTER AND POLYETHER
- 5 µM TO 25 µM MEMBRANE THICKNESS
- 100% WATERPROOF
- OPTIMAL BREATHABLE
- 100% WINDPROOF
- CO₂, OXYGEN AND WATER VAPOUR PERMEABLE
- CAN BE STRETCHED BY UP TO 300%
- ELASTIC PROPERTIES
- EASY CARE, PORELESS MEMBRANE, INSENSITIVE TO DIRT AND DETERGENT RESIDUES, NO ADVERSE EFFECT ON THE MEMBRANE FUNCTION

PROTECTIVE PROPERTIES

- DURABLY WATERPROOF, REGARDLESS OF WHETHER IT IS WASHED, DRY CLEANED, SUBJECTED TO PERMANENT KINKING, OR SOILED BY FUEL OR OIL
- EXCELLENT PROTECTION FROM VIRUSES, BACTERIA AND BODILY FLUIDS
- RESISTANCE TO VARIOUS CHEMICALS
- SUITABLE AS A MEDICAL PRODUCT DUE TO ITS BIOCOMPATIBILITY
- THERMAL PROTECTION
- PROTECTION FROM CONDENSATION

ECOLOGICAL PROPERTIES

IN TERMS OF FUNCTIONAL TEXTILES, SYMPATEX TECHNOLOGIES HAS PROVED THAT HIGH TECH AND ENVIRONMENTAL PROTECTION CAN COMPLEMENT EACH OTHER. THE FUNCTIONAL TEXTILE SPECIALIST HAS FIRMLY ESTABLISHED ITSELF AS THE ECOLOGICAL ALTERNATIVE ON THE MARKET AND MAKES A STEADY CONTRIBUTION TO IMPROVING THE ECO-BALANCE BY ITS RESOURCE-SAVING PRODUCTION PROCESSES. THE SYMPATEX MEMBRANE IS GUARANTEED GREEN. IN OTHER WORDS 100% RECYCLABLE LIKE A PET BOTTLE. IT IS MADE OF COMPLETELY SAFE POLYETHER/ESTER, A COMBINATION OF POLYESTER AND POLYETHER MOLECULES AND IS THEREFORE COMPLETELY ECO-FRIENDLY AS WELL AS KIND ON THE SKIN.

DRYCLIM



THESE FABRICS ARE TECHNOLOGICALLY DEVELOPED FROM MICRO-FIBRES THAT FILTER PERSPIRATION TO THE EXTERIOR IN ORDER TO PROVIDE THE ATHLETE THE MAXIMUM COMFORT AND EASE. THEY CONTROL THE HUMIDITY BY ABSORBING THE BODY SWEAT AND EXPELLING IT TO THE EXTERIOR. DRY-CLIM IS SPECIALLY CREATED IN ORDER TO IMPROVE ATHLETE'S MICROCLIMATE AND PERFORMANCE.

TO THE DRY-CLIM QUALITIES, WE ADD THE PROPERTIES OF THE ELASTIC FABRICS, IN ORDER TO IMPROVE THE ATHLETE'S COMFORT. THIS WAY, THE ADJUSTMENT, MOVEMENT AND CALORIFIC DIFFUSION ARE OPTIMUM.

DRIRELEASE



WHAT IS DRIRELEASE?

DRIRELEASE IS A UNIQUE BLEND OF FIBERS THAT CREATES A PATENTED PERFORMANCE FABRIC TECHNOLOGY. SPECIALLY, THE BLEND IS 85-90% HYDROPHOBIC (WATER-HATING) SYNTHETIC FIBRES AND 10-15% HYDROPHILIC (WATER-LOVING) NATURAL FIBERS. THIS ENGINEERED BLEND CREATES FABRICS THAT PROVIDE SUPERIOR WICKING AND FAST DRYING CAPABILITIES. AND OVERALL PEAK PERFORMANCE COMPARED TO OTHER TECHNOLOGIES ON THE MARKET.

HOW DOES DRIRELEASE WORK?

THE UNIQUE 85/15 BLEND CREATES A PUSH AND PULL EFFECT THAT EFFECTIVELY PULLS MOISTURE AND PERSPIRATION AWAY FROM THE SKIN AND PUSHES IT OUT OF THE FABRIC FOR IMPROVED EVAPORATION. DRIRELEASE ALSO CONTROLS ODOR THROUGH FRESHGUARD®, A BUILT-IN NATURAL ODOR NEUTRALIZER SYSTEM. IT IS NOT AN ANTIMICROBIAL BECAUSE IT DOESN'T KILL BACTERIA, BUT INSTEAD IT HELPS PREVENT BACTERIA FROM GROWING. (AND IT'S ENVIRONMENTAL FRIENDLY)

ECOREC



FABRIC COMPOSED OF RECYCLED POLYESTER. THE RECYCLED POLYESTER COMES FROM BOTTLES OF EUROPEAN MANUFACTURE. THE RECYCLING PROCESS IS DONE IN EUROPE.



SHELTER 3L / JACKET

ART. NO.: M15-101BL

FARBE / COLOR OLYMPIAN BLUE

- 100 % PES
- 3 LAGEN / 3 LAYERS
- WASSERDICHT 20.000MM / WATERPROOF 20.000MM
- ATMUNGSAKTIV / OPTIMAL BREATHABILITY
- WINDDICHT / WIND PROOF
- VERTAPTE NÄHTE / TAPED SEAMS
- EXTRA GROSSE KAPUZE MIT KORDELZUG ZUR NUTZUNG MIT UND OHNE HALBSCHALENHELM / EXTRA WIDE HOOD WITH CORDS FOR USE WITH AND WITHOUT HELMET
- GROSSE LÜFTUNGS-RV UNTER DEN ARMEN / LARGE AIR VENT ZIPPERS UNDER BOTH ARMS
- BRUSTTASCHE MIT DURCHGANG FÜR KOPFHÖRER / FRONT POCKET WITH CHANNEL FOR HEADPHONES
- 2 RV-TASCHEN VORNE / 2 ZIP POCKETS ON FRONT
- KORDELZUG AM BUND / ELASTIC CORD AT WAISTBAND
- GUMMIERTE RV / WATER PROOF ZIPPERS
- VERLÄNGERTER RÜCKEN / LONGER BACKPANEL
- LEGERER SCHNITT / CASUAL CUT
- SEHR LEICHT UND KLEINES PACKMASS / LIGHTWEIGHT AND SMALL PACKING SIZE
- ASYMMETRISCHER SCHNITT / ASYMMETRIC CUT

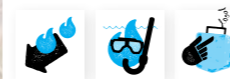


TEMPEST / FLEECE ZIP HOODY

ART. NO.: M15-103BL

FARBE / COLOR OLYMPIAN BLUE, BLACK IRIS

- 100% PES
- DRYCLIM *
- SCHNELLTROCKNEND / QUICK DRYING
- ATMUNGSAKTIV / OPTIMAL BREATHABILITY
- INNEN WEICH AUFGERAUT FÜR ANGENEHMEN TRAGEKOMFORT / LIGHTLY BRUSHED ON THE INSIDE FOR MORE COMFORT
- 2 RV-TASCHEN VORNE MIT INNENLIEGENDER I-POD TASCHEN / 2 ZIP POCKETS IN FRONT WITH HIDDEN IPOD POCKET



SOBER / FREERIDE JERSEY

ART. NO.: M15-401YE

FARBE / COLOR FREESIA

- 100% PES
- DRYCLIM
- 100% RECYCELTES MATERIAL / 100% RECYCLED MATERIAL
- SCHNELLTROCKNEND / QUICK DRYING
- HOHER TRAGEKOMFORT / HIGH WEARING COMFORT



SOBER / FREERIDE JERSEY

ART. NO.: M15-401BL

FARBE / COLOR OLYMPIAN BLUE

- 100% PES
- DRYCLIM
- 100% RECYCELTES MATERIAL / 100% RECYCLED MATERIAL
- SCHNELLTROCKNEND / QUICK DRYING
- HOHER TRAGEKOMFORT / HIGH WEARING COMFORT





TRACK / FREERIDE SHORTS

ART. NO.: M15-301BY

FARBE / COLOR OLYMPIAN BLUE, FREESIA

- 96% PES, 4% ELASTAN / 96% PES, 4% EA
- LEGERER CARGOSCHNITT / CASUAL CARGO LOOK
- WASSERABWEISEND / WATER REPELLENT
- SEHR LEICHTES STRETCHMATERIAL / LIGHTWEIGHT STRETCH MATERIAL
- 2 BELÜFTUNGSZIPPER / 2 AIR VENT ZIPPERS
- 1 CARGOTASCHE MIT MAGNETKNÖPFEN / 1 CARGO POCKET WITH MAGNETIC STUDS
- RV-TASCHE AM GESÄSS / ZIP POCKET AT BACKSIDE
- BUNDWEITE VERSTELLBAR UND GÜRTELSCHLAUFEN / ADJUSTABLE WAIST AND BELT LOOPS
- FLEXZONE OBERHALB VOM GESÄSS / FLEX ZONE AT BACKSIDE
- ASYMMETRISCHER SCHNITT / ASYMMETRIC CUT



VOGUE / FREERIDE JERSEY

ART. NO.: W15-402RE

FARBE / COLOR CHINESE RED

- 100% PES
- DRYCLIM
- 100% RECYCELTES MATERIAL / 100% RECYCLED MATERIAL
- SCHNELLTROCKNEND / QUICK DRYING
- HOHER TRAGEKOMFORT / HIGH WEARING COMFORT



VOGUE SL / FREERIDE JERSEY

ART. NO.: W15-403BL

FARBE / COLOR TWILIGHT BLUE

- 100% PES
- DRYCLIM
- 100% RECYCELTES MATERIAL / 100% RECYCLED MATERIAL
- SCHNELLTROCKNEND / QUICK DRYING
- HOHER TRAGEKOMFORT / HIGH WEARING COMFORT



BASK / FLEECE ZIP HOODY

ART. NO.: W15-102RE

FARBE / COLOR CHINESE RED

- 100% PES
- DRYCLIM *
- SCHNELLTROCKNEND / QUICK DRYING
- ATMUNGSAKTIV / OPTIMAL BREATHABILITY
- INNEN WEICH AUFGERAUT FÜR ANGENEHMEN TRAGEKOMFORT / LIGHTLY BRUSHED ON THE INSIDE FOR MORE COMFORT
- 2 RV-TASCHEN VORNE MIT INNENLIEGENDER I-POD TASCHEN / 2 ZIP POCKETS IN FRONT WITH HIDDEN IPOD POCKET



VALLEY / FREERIDE SHORTS

ART. NO.: W15-302BL

FARBE / COLOR OLYMPIAN BLUE

- 96% PES, 4% ELASTAN / 96% PES, 4% EA
- LEGERER SCHNITT / CASUAL LOOK
- WASSERABWEISEND / WATER REPELLENT
- SEHR LEICHTES STRETCHMATERIAL / LIGHTWEIGHT STRETCH MATERIAL
- 2 BELÜFTUNGSZIPPER VORNE / 2 AIR VENT ZIPPERS ON FRONT
- 2 RV-TASCHEN / 2 ZIP POCKETS
- BUNDEWEITE VERSTELLBAR UND GÜRTELSCHLAUFEN / ADJUSTABLE WAIST AND BELT LOOPS
- FLEXZONE OBERHALB VOM GESÄSS / FLEX ZONE AT BACKSIDE



GLORY / DOWNHILL JERSEY

ART. NO.: M15-201MC

FARBE / COLOR BLACK IRIS, MULTI COLOR

- 100% PES
- DRYCLIM
- 100% RECYCELTES MATERIAL / 100% RECYCLED MATERIAL
- SCHNELLTROCKNEND / QUICK DRYING
- HOHER TRAGEKOMFORT / HIGH WEARING COMFORT



SOBER LS / DOWNHILL JERSEY

ART. NO.: M15-203PB

FARBE / COLOR PORCELAIN BLUE

- 100% PES
- SCHNELLTROCKNEND / QUICK DRYING



COLLAPSE / DOWNHILL JERSEY

ART. NO.: M15-201YE

FARBE / COLOR BLACK IRIS, FREESIA

- 100% PES
- DRYCLIM
- 100% RECYCELTES MATERIAL / 100% RECYCLED MATERIAL
- SCHNELLTROCKNEND / QUICK DRYING
- HOHER TRAGEKOMFORT / HIGH WEARING COMFORT



RETRO / DOWNHILL JERSEY

ART. NO.: M15-203RE

FARBE / COLOR TOMATO RED

- 100% PES
- SCHNELLTROCKNEND / QUICK DRYING



DESCENT / DOWNHILL PANTS

ART. NO.: U15-303BL

FARBE / COLOR BLACK IRIS

- 100% PES
- WASSERABWEISEND / WATER REPELLENT
- STRAPAZIERFÄHIGES MATERIAL, MIT MESH GEFÜTTERT / HEAVY DUTY MATERIAL, MESH LINING INSIDE
- 2 BELÜFTUNGSZIPPER VORNE / 2 AIR VENT ZIPPERS ON FRONT
- 2 RV-TASCHEN / 2 ZIP POCKETS
- BUNDWEITE VERSTELLBAR UND GÜRTELSCHALUFEN / ADJUSTABLE WAIST AND BELT LOOPS
- ELASTISCHE EINSÄTZE AM KNIE / ELASTIC INSERTS AT KNEE
- FLEXZONE OBERHALB VOM GESÄSS / FLEX ZONE AT BACKSIDE

**PARK / DOWNHILL SHORTS**

ART. NO.: M15-305BR

FARBE / COLOR TOMATO, BLACK IRIS

- 100% PES
- LEGERER SCHNITT / CASUAL LOOK
- WASSERABWEISEND / WATER REPELLENT
- STRAPAZIERFÄHIGES MATERIAL, MIT MESH GEFÜTTERT / HEAVY DUTY MATERIAL, MESH LINING INSIDE
- 2 BELÜFTUNGSZIPPER / 2 AIR VENT ZIPPERS
- 1 CARGOTASCHE / 1 CARGO POCKET
- RV-TASCHE SEITLICH UND AN GESÄSS / ZIP POCKET AT SIDE AND BACK
- BUNDWEITE VERSTELLBAR UND GÜRTELSCHLAFEN / ADJUSTABLE WAIST AND BELT LOOPS
- FLEXZONE OBERHALB VOM GESÄSS / FLEX ZONE AT BACKSIDE

**FREEDOM / DOWNHILL SHORTS**

ART. NO.: M15-301BL

FARBE / COLOR BLACK IRIS

- 100% PES
- LEGERER CARGOSCHNITT / CASUAL CARGO LOOK
- WASSERABWEISEND / WATER REPELLENT
- STRAPAZIERFÄHIGES MATERIAL, MIT MESH GEFÜTTERT / HEAVY DUTY MATERIAL, MESH LINING INSIDE
- 2 BELÜFTUNGSZIPPER / 2 AIR VENT ZIPPERS
- 2 CARGOTASCHE MIT MAGNETKNÖPFEN / 2 CARGO POCKETS WITH MAGNETIC STUDS
- BUNDWEITE VERSTELLBAR UND GÜRTELSCHLAFEN / ADJUSTABLE WAIST AND BELT LOOPS
- FLEXZONE OBERHALB VOM GESÄSS / FLEX ZONE AT BACKSIDE



KLAUSMANN / DOWNHILL JERSEY

ART. NO.: K14-201RE

FARBE / COLOR TOMATO RED

- 100% PES
- DRYCLIM *
- 100% RECYCELTES MATERIAL / 100% RECYCLED MATERIAL
- SCHNELLTROCKNEND / QUICK DRYING
- HOHER TRAGEKOMFORT / HIGH WEARING COMFORT



KLAUSMANN / DOWNHILL SHORTS

ART. NO.: K14-333RE

FARBE / COLOR TOMATO RED

- 100% PES
- GERADER SCHNITT / STRAIGHT CUT
- WASSERABWEISEND / WATER REPELLENT
- STRAPARZIERFÄHIGES MATERIAL, MIT MESH GEFÜTTERT / HEAVY DUTY MATERIAL, MESH LINING INSIDE
- LASERGESCHNITTENE LÜFTUNGSLÖCHER / LASER CUT HOLES FOR VENTILATION
- 2 RV-TASCHEN SEITLICH / 2 ZIP POCKETS AT SIDE
- BUNDEWEITE VERSTELLBAR UND GÜRTELSCHLAUFEN / ADJUSTABLE WAIST AND BELT LOOPS
- FLEXZONE VORNE UND OBERHALB VOM GESÄSS / FLEX ZONE AT FRONT AND BOTTOM





LEAFE / DOWNHILL JERSEY

ART. NO.: W15-202YE

FARBE / COLOR OLD GOLD

- 100% PES
- DRYCLIM *
- 100% RECYCELTES MATERIAL / 100% RECYCLED MATERIAL
- SCHNELLTROCKNEND / QUICK DRYING
- HOHER TRAGEKOMFORT / HIGH WEARING COMFORT



NIFTY / DOWNHILL JERSEY

ART. NO.: W15-202RE

FARBE / COLOR CHINESE RED

- 100% PES
- DRYCLIM *
- 100% RECYCELTES MATERIAL / 100% RECYCLED MATERIAL
- SCHNELLTROCKNEND / QUICK DRYING
- HOHER TRAGEKOMFORT / HIGH WEARING COMFORT



PEBBLES / DOWNHILL SHORTS

ART. NO.: W15-3026R

FARBE / COLOR DARK GREY

- 100% PES
- LEGERER CARGOSCHNITT / CASUAL CARGO LOOK
- WASSERABWEISEND / WATER REPELLENT
- STRAPAZIERFÄHIGES MATERIAL, MIT MESH GEFÖTTERT / HEAVY DUTY MATERIAL, MESH LINING INSIDE
- 2 BELÜFTUNGSZIPPER VORNE / 2 AIR VENT ZIPPERS ON FRONT
- 1 CARGOTASCHE / 1 CARGO POCKET
- 1 RV-TASCHE / 1 ZIP POCKET
- BUNDWEITE VERSTELLBAR UND GÜRTELSCHLAUFEN / ADJUSTABLE WAIST AND BELT LOOPS
- FLEXZONE OBERHALB VOM GESÄSS / FLEX ZONE AT BACKSIDE





CLASSIC / HOODY

ART. NO.: M15-513BL

FARBE / COLOR OLYMPIAN BLUE

- 100% BAUMWOLLE / 100% COTTON
- BAUCHTASCHE / BUMBAG
- NORMALER SCHNITT / REGULAR FIT



INDIAN SUMMER / T-SHIRT

ART. NO.: M15-503DB

FARBE / COLOR OLYMPIAN BLUE

- 82% PES. 15% BAUMWOLLE. 3% ELASTAN / 82% PES. 15% CO. 3% EA
- DRI-RELEASE
- SCHNELLTROCKNEND / QUICK DRYING
- GERUCHSNEUTRALISIEREND / ODOR NEUTRALISING
- HOHER TRAGEKOMFORT / HIGH WEARING COMFORT
- NORMALER SCHNITT / REGULAR FIT



drirelease®



SWANK / SWEATSHIRT

ART. NO.: M15-521GR

FARBE / COLOR GREY, TOMATO RED, BLACK IRIS

- 100% BAUMWOLLE / 100% COTTON
- BRUSTASCHE / FRONT BAG
- NORMALER SCHNITT / REGULAR FIT

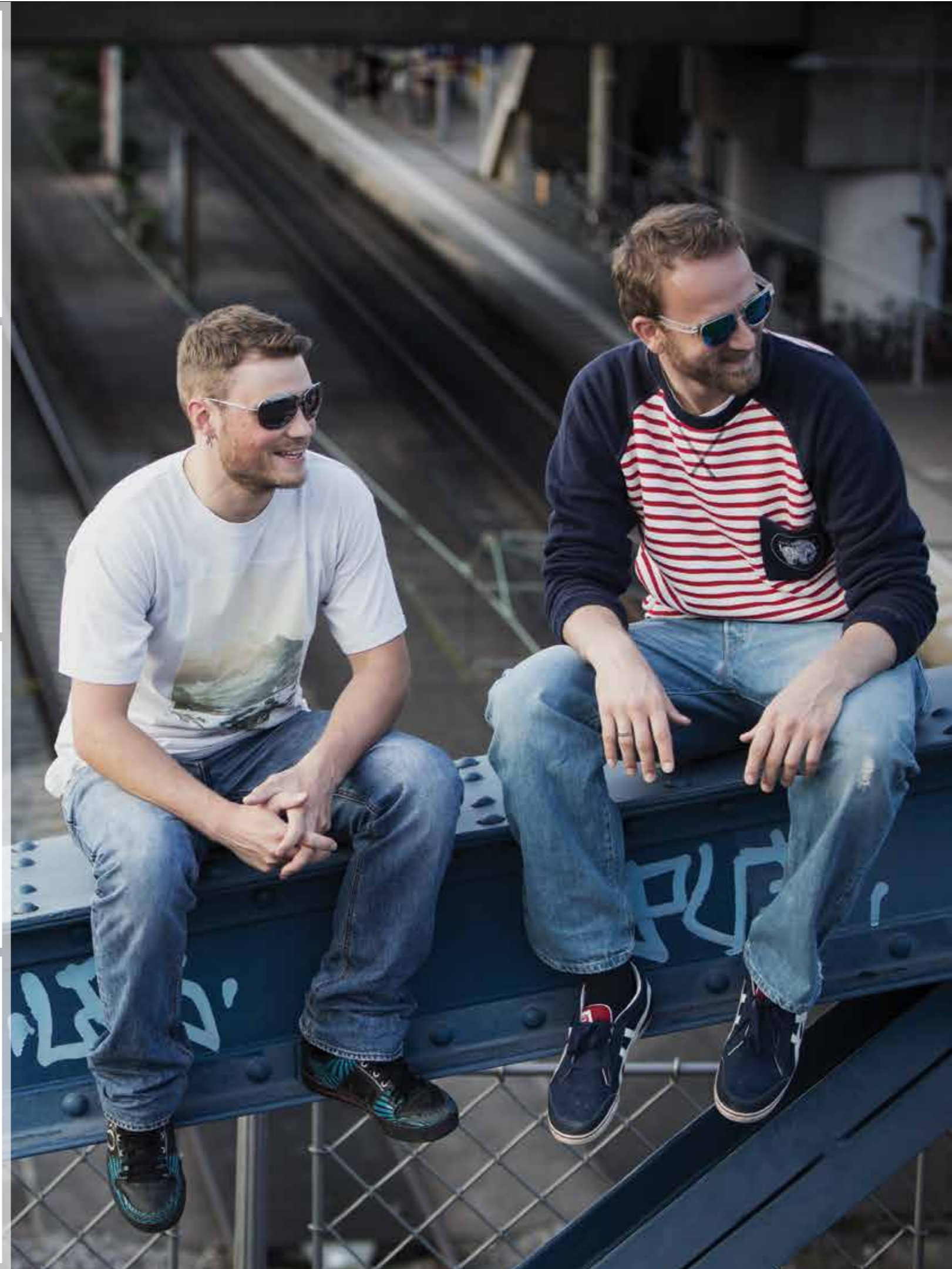


MOUNTAIN LOVE / T-SHIRT

ART. NO.: M15-505GR

FARBE / COLOR LIGHT GREY

- 100% BAUMWOLLE / 100% COTTON
- NORMALER SCHNITT / REGULAR FIT





TOMAHAWK / TANK TOP

ART. NO.: M15-5000B

FARBE / COLOR OLYMPIAN BLUE

- 82% PES, 15% BAUMWOLLE, 3% ELASTAN / 82% PES, 15% CO, 3% EA
- DRI-RELEASE
- SCHNELLTROCKNEND / QUICK DRYING
- GERUCHSNEUTRALISIEREND / ODOR NEUTRALISING
- HOHER TRAGEKOMFORT / HIGH WEARING COMFORT
- NORMALER SCHNITT / REGULAR FIT



drirelease®



CLASSIC / T-SHIRT

ART. NO.: M13-501BL
M15-501RE

FARBE / COLOR BLACK, FLAME SCARLET

- 100% BAUMWOLLE / 100% COTTON
- NORMALER SCHNITT / REGULAR FIT





LOGGER / FLANELL SHIRT

ART. NO.: M15-511MC

FARBE / COLOR MULTICOLOR

- 100% BAUMWOLLE / 100% COTTON
- ENGER SCHNITT / SLIM FIT



TRACE / T-SHIRT

ART. NO.: W15-502DR

FARBE / COLOR OLYMPIAN BLUE

- 82% PES, 15% BAUMWOLLE, 3% ELASTAN / 82% PES, 15% CO, 3% EA
- DRI-RELEASE
- SCHNELLTROCKNEND / QUICK DRYING
- GERUCHSNEUTRALISIEREND / ODOR NEUTRALISING
- HOHER TRAGEKOMFORT / HIGH WEARING COMFORT
- NORMALER SCHNITT / REGULAR FIT



drirelease®



SHORE / LOOSE FIT T-SHIRT

ART. NO.: W15-505LF

FARBE / COLOR OLYMPIAN BLUE

- 100% BAUMWOLLE / 100% COTTON
- WEITER SCHNITT / LOOSE FIT



SNUGGLE / SWEATSHIRT

ART. NO.: W15-510SW

FARBE / COLOR MAZARINE BLUE

- 100% BAUMWOLLE / 100% COTTON
- NORMALER SCHNITT / REGULAR FIT



FRESH / TANK TOP

ART. NO.: W15-504RE

FARBE / COLOR TANGO RED

- 100% BAUMWOLLE / 100% COTTON
- NORMALER SCHNITT / REGULAR FIT



BEAR / FREERIDE GLOVE

FARBE / COLOR BLACK/OLYMPIAN BLUE
BLACK/BLACK
BLACK/RED
BLACK/YELLOW

ART. NO.: U15-701BQ
U15-701BB
U15-701BR
U15-701BY

- OBERSEITE 100% NYLON / KNUCKLE SIDE 100% NYLON
- HANDFLÄCHE 55% NYLON, PU / PALM SIDE 55% NYLON, PU



CLASSIC / UNDERPANTS WOMEN

ART. NO.: W15-802BK

FARBE / COLOR BLACK

- 86% PA 14% EA / 86% PA 14% EA
- GEWICHT / WEIGHT G\M2 145
- VORGEFORMTES BIELASTISCHES SITZPOLSTER, COOLMAX. / PRE-SHAPED PAD BIELASTIC, COOLMAX FABRIC



CLASSIC / UNDERPANTS MEN

ART. NO.: M15-801BK

FARBE / COLOR BLACK

- 86% PA 14% EA / 86% PA 14% EA
- GEWICHT / WEIGHT G\M2 145
- VORGEFORMTES BIELASTISCHES SITZPOLSTER, COOLMAX. / PRE-SHAPED PAD BIELASTIC, COOLMAX FABRIC



CLASSIC / SOCKS

ART. NO.: U15-602BK

FARBE / COLOR BLACK

- 65% PES, 30% BAUMWOLLE, 5% ELASTHAN / 65% PES, 30% COTTON, 5% SPANDEX
- PLÜSCHFUSS / SOFT FOOT



CLASSIC / KNEE SOCKS

ART. NO.: U15-601YB

FARBE / COLOR YELLOW / BLUE

- 65% PES, 30% BAUMWOLLE, 5% ELASTHAN / 65% PES, 30% COTTON, 5% SPANDEX
- PLÜSCHFUSS / SOFT FOOT



KINK / KNEE SOCKS

ART. NO.: U15-602BL

FARBE / COLOR BLUE

- 65% PES, 30% BAUMWOLLE, 5% ELASTHAN / 65% PES, 30% COTTON, 5% SPANDEX
- PLÜSCHFUSS / SOFT FOOT

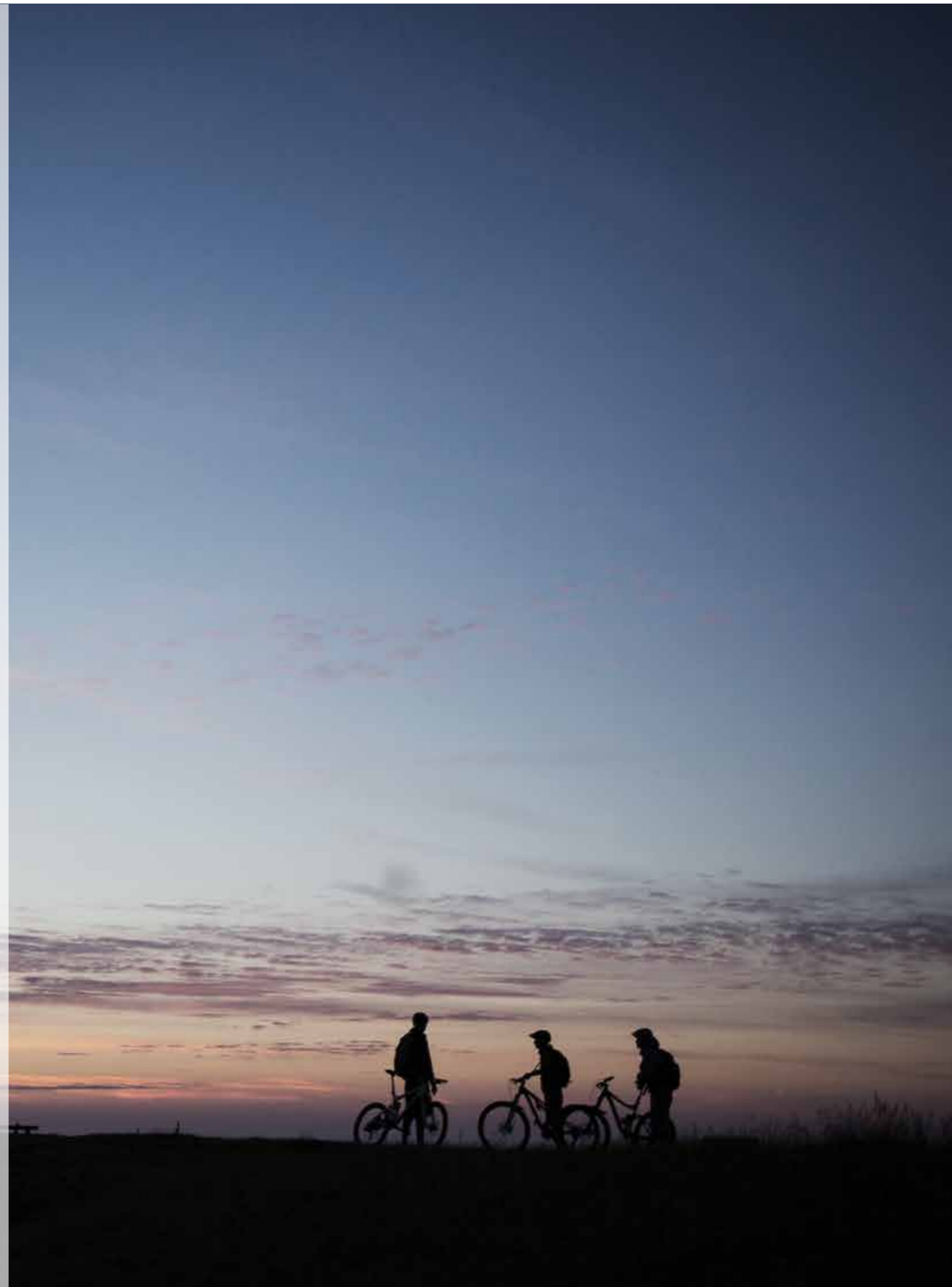


CLASSIC / KNEE SOCKS

ART. NO.: U15-601YR

FARBE / COLOR YELLOW / RED

- 65% PES, 30% BAUMWOLLE, 5% ELASTHAN / 65% PES, 30% COTTON, 5% SPANDEX
- PLÜSCHFUSS / SOFT FOOT



MALE / DOWNHILL / FREERIDE / STREET

COLLAPSE / DH



GLORY / DH



SOBER LS / DH



RETRO / DH



KLAUSMANN / DH



DESCENT / DH



FREEDOM / DH



PARK / DH



KLAUSMANN / DH



SOBER / FR



SOBER / FR



SHELTER 3L / FR



TEMPEST / FR



FEMALE / DOWNHILL / FREERIDE / STREET

LEAFE / DH



NIFTY / DH



PEBBLES / DH



BASK / FR



VOGUE / FR



VOGUE SL / FR



TRACK / FR



CLASSIC / UNDERPANTS



LOGGER / STREET



SWANK / STREET



CLASSIC / STREET



SNUGGLE / STREET



CLASSIC / UNDERPANTS



VALLEY / FR



MOUNTAIN LOVE / STREET



INDIAN SUMMER / STREET



CLASSIC / STREET



CLASSIC / STREET



TOMAHAWK / STREET



TRACE / STREET



SHORE / STREET



FRESH / STREET



UNISEX / ACCESSOIRES

BEAR / FREERIDE GLOVE



CLASSIC / SOCKS



CLASSIC / KNEE SOCKS



CLASSIC / KNEE SOCKS



KINK / KNEE SOCKS



Built
in europe
to rock n roll
in all terrain.
handcrafted
by locals.



IMPRESSUM & KONTAKT

LOCAL OUTERWEAR
KRONAUER & KRONAUER GBR
KARTÄUSERSTRASSE 138
79102 FREIBURG
FON 0761. 5 19 65 72
INFO@LOCAL-OUTERWEAR.COM
LOCAL-OUTERWEAR.COM

PHOTOGRAPHIE
BASCHI BENDER
BASCHIBENDER.DE
OLIVER ROGGENBUCK
ROGGENBUCK-PHOTODESIGN.DE

KONZEPT & GESTALTUNG
RHIEMEIER MSA
FLOHRIAN RHIEMEIER
STEFFEN BLOMEIER